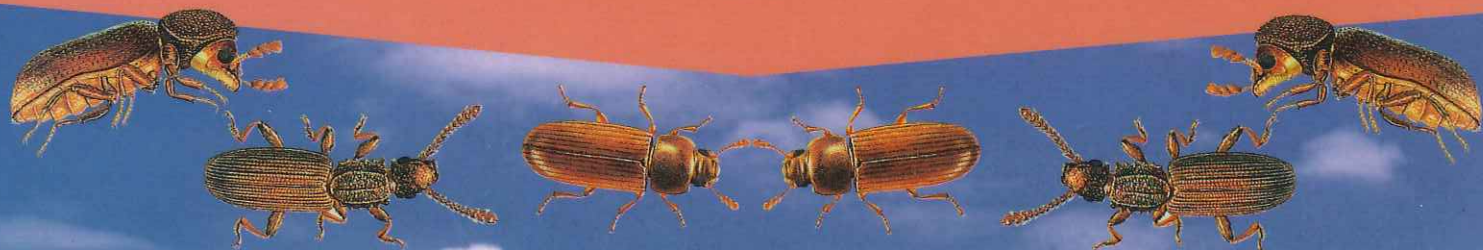


GASTION®

PHOSPHINE FUMIGATION PRODUCTS



RENTOKIL GASTION APPLICATION/DOSAGE RATES* FOR WELL SEALED SILOS

VOLUME OF SILO FOR FUMIGATION		RENTOKIL GASTION			EXPOSURE PERIODS	
		3 g Tablets	340 g Belt	3.4 kg Belt	15° - 25° C	+ 25° C
50 Tonne	67 cu. metres	100	1	-	10 D A Y S	7 D A Y S
75 Tonne	100 cu. metres	150	2	-		
100 Tonne	133 cu. metres	200	2	-		
150 Tonne	200 cu. metres	300	3	-		
200 Tonne	267 cu. metres	400	4	-		
500 Tonne	667 cu. metres	1000	10	1		

Please refer to the product label for exposure periods

*Application/dosage rates are based on the internal volume of the structure (silo) to be fumigated. They apply equally to fully, partly filled or empty structures and apply to all commodities. The basic dosage rate is calculated at 1.5 g of Phosphine gas per cubic metre of internal volume. For ventilation periods and safety procedures please refer to the Gastion product label.

For unsealed/Bolted silos the above application/dosage rates may need to increase approximately 3 times. Please refer to the Gastion product label for accurate rates, safety procedures and ventilation periods.

PRE STORAGE PEST MANAGEMENT: Prior to augering grain into structures (silos), all machinery, silo walls (inside and outside) and associated equipment etc, must be cleaned and pre-treated with an approved adulticide, ie. Rentokil Fenitrothion 1000.

CAUTION: KEEP OUT OF REACH OF CHILDREN

READ ALL PRODUCT LABELS INCLUDING SAFETY DIRECTIONS BEFORE OPENING OR USING PRODUCT